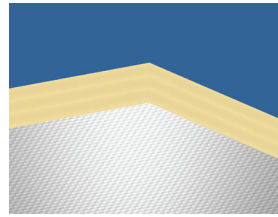
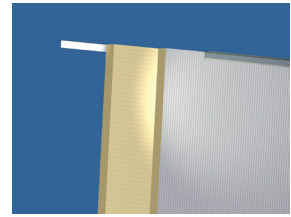


ECOPHON COMBISON™ BARRIER

For use as acoustic barrier above partitions in plenum to improve the room to room sound insulation. The Combison Barrier should be used together with other Ecophon systems. Each panel is easily demountable.



Combison Barrier tile



Section of Combison Barrier system

SYSTEM RANGE

Size, mm	1200 x 600
Direct	•
Thickness	40
Inst. Diagr.	M160

TECHNICAL PROPERTIES



ACOUSTIC

Country	Standard	Class
Europe	EN 13501-1	A2-s1,d0



MECHANICAL PROPERTIES Not applicable



INSTALLATION Installed according to system range which includes information regarding minimum overall depth of system.



ACCESSIBILITY The tiles are demountable.



CLEANABILITY Not applicable.



VISUAL APPEARANCE Not applicable. The panel has aluminium foil on one side.



INFLUENCE OF CLIMATE The tiles withstand a permanent ambient RH up to 95% at 30°C without sagging, warping or delaminating (ISO 4611).



INDOOR CLIMATE Certified by the Indoor Climate Labelling and recommended by the Swedish Asthma and Allergy Association.



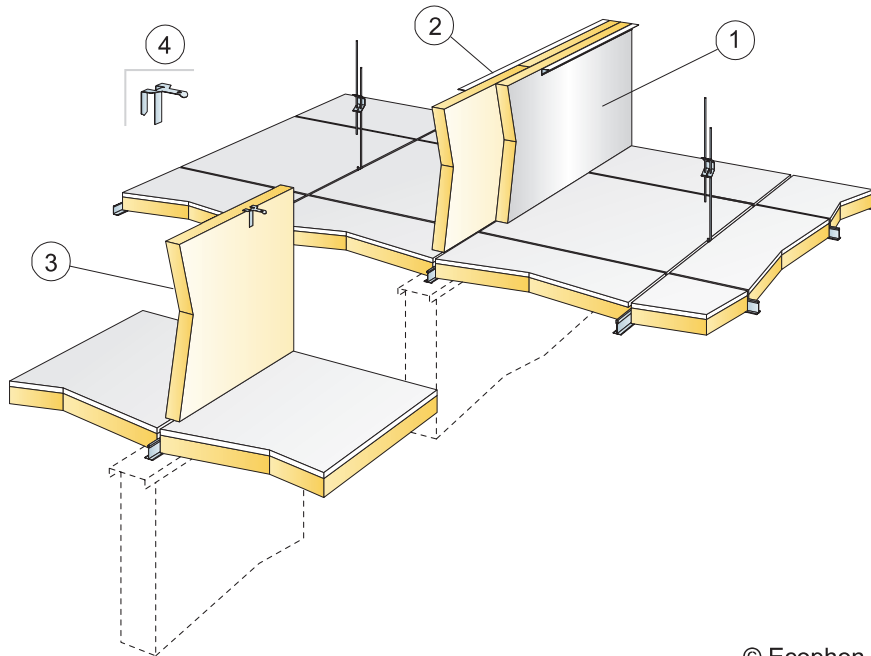
ENVIRONMENTAL INFLUENCE Fully recyclable



FIRE SAFETY The glass wool core of the tiles is tested and classified as non-combustible according to EN ISO 1182. See Functional demands, Fire safety.

Reaction-to-fire classification

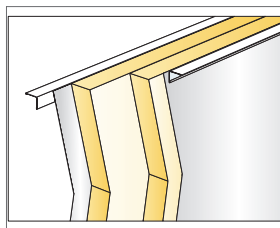
INSTALLATION DIAGRAM (M160) FOR COMBISON BARRIER



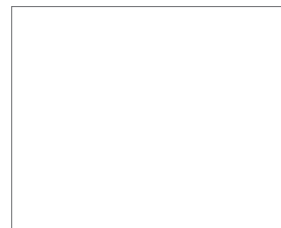
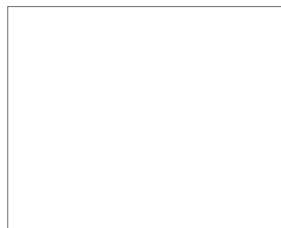
© Ecophon Group

QUANTITY SPECIFICATION (EXCL. WASTAGE)

		Size, mm
		1200x600
1	Combison Barrier in double layers with displaced joints and exposed alu-foil side	as required
2	Connect Angle trims position upper part of Barrier panels	as required
3	Combison Barrier in single layer	as required
4	Connect Frieze bracket, position upper part of Barrier panels	as required



Double layers of Combison Barrier with Connect Angle trim



Size, mm	Max live load [N]	Min load bearing capacity [N]

Live load/load bearing capacity