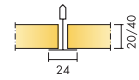




ECOPHON HYGIENE FOODTEC™ A C3

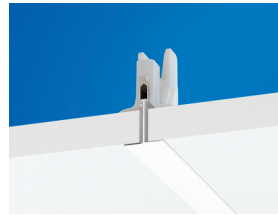


Ecophon Hygiene Foodtec A C3 is a wall to wall, sound-absorbing ceiling system intended for environments where there is risk for contaminations, and where frequent cleaning is required. This system is recommended where humidity levels are occasionally high. Examples of applications: the food and beverage industries, restaurants and catering kitchens.

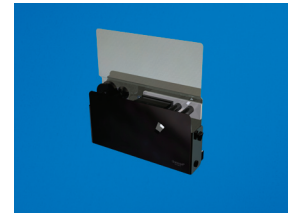
The system consists of Ecophon Hygiene Foodtec A tiles, which have a core of high density glass wool and a painted stain protected Akutex HS surface. The back and the edges are painted. The tile is designed to be demounted and cleaned on a regular basis. The supporting structure is a corrosion protected exposed Connect T24 C3 grid of lacquered galvanised steel. The weight of the system is 3-4 kg/m². The tiles should be secured to the grid with Connect Hygiene clips in order to withstand pressure during cleaning and to minimise.



Hygiene Foodtec A system



Hygiene Foodtec A C3 section with Connect Hygiene clip 20

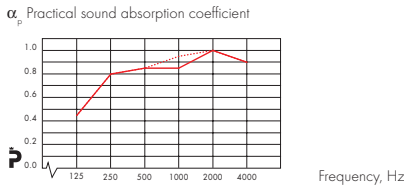


SYSTEM RANGE

Size, mm	600	1200
	x	x
	600	600
T24	•	•
Thickness	40	40
Inst. Diagr.	M249	M249

TECHNICAL PROPERTIES

ACOUSTIC Sound Absorption Test results according to EN ISO 354. Classification according to EN ISO 11654.



— Ecophon Hygiene Foodtec A C3, 20 mm, 200 mm o.d.s.
 Ecophon Hygiene Foodtec A C3, 40 mm, 200 mm o.d.s.
 o.d.s= overall depth of system

Product	Hygiene Foodtec A C3, 20 mm thick	Hygiene Foodtec A C3, 40 mm thick
o.d.s mm	200	200
absorption class	A	A
α_w		

Sound Insulation Not applicable.

Sound Privacy Not applicable

ACCESSIBILITY The tiles are demountable. Minimum demounting depth according to installation diagram. The tiles are secured using clips to allow for effective cleaning. The clips are easily removable from above the ceiling. An easy-to-open Connect Inspection hatch is available to simplify access to the ceiling void.

CLEANABILITY Daily dusting and vacuum cleaning. Weekly wet wiping on all surfaces, high-pressure washing and wet cleaning twice a year (water temperature max. 35°C). Steam cleaning four times/year. Can withstand the use of common disinfecting chemicals.

VISUAL APPEARANCE White 500, nearest NCS colour sample S 0500-N, 84% light reflectance.

INFLUENCE OF CLIMATE The tiles withstand a permanent ambient RH up to 95% at 30°C without sagging, warping or delaminating (ISO 4611). A higher temperature/moisture is permissible during washing as stated above. The grid and accessories meet the demands of corrosion class C3 according to EN ISO 12944-2. For the microbiological resistance see Functional demands, Influence of climate.

INDOOR CLIMATE Certified by the Indoor Climate Labelling, emission class M1 for building materials, recommended by the Swedish Asthma and Allergy Association, and can be used in rooms classified as ISO class 5 according to ISO 14644-1.

ENVIRONMENTAL INFLUENCE Granted the Nordic Swan eco-label. Fully recyclable.

FIRE SAFETY The glass wool core of the tiles is tested and classified as non-combustible according to prEN ISO 1182. The systems are classified as fire protective covering according to NT FIRE 003. See Technical properties, Fire safety.

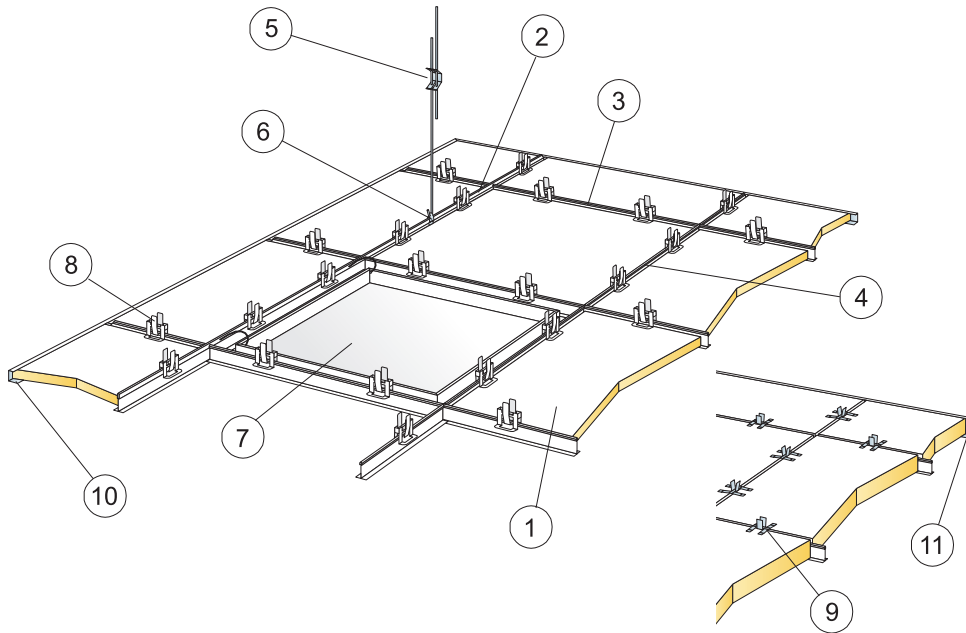
Reaction-to-fire classification

Country	Standard	Class
Europe	EN 13501-1	A2-s1,d0

MECHANICAL PROPERTIES For information regarding live load and requirements for load bearing capacity, see installation diagrams. Conditions: See Functional demands, Mechanical properties.

INSTALLATION Installed according to system range. Cut panels must be sealed with Connect sealing tape using the Connect Tape applicator, or Connect Edge sealant. Penetrations must be sealed with a suitable sealant.

INSTALLATION DIAGRAM (M249) FOR ECOPHON HYGIENE FOODTEC A C3



© Ecophon Group

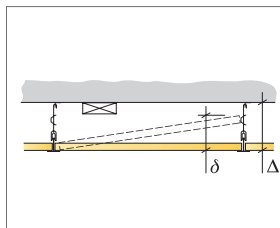
QUANTITY SPECIFICATION (EXCL. WASTAGE)

	Size, mm	
	600x600	1200x600
1 Ecophon Hygiene Foodtec A	2,8/m ²	1,4/m ²
2 Connect T24 Main runner C3, installed at 1200 mm centres	0,9m/m ²	0,9m/m ²
3 Connect T24 Cross tee C3, L=1200 mm, installed at 600 mm centres	1,7m/m ²	1,7m/m ²
4 Connect T24 Cross tee C3, L=600 mm	0,9m/m ²	-
5 Connect Adjustable hanger C3, c1200 (max distance from wall 600 mm)	0,7/m ²	0,7/m ²
6 Connect Hanger clip	0,7/m ²	0,7/m ²
7 Connect Inspection hatch C3	as required	as required
8 Connect Hygiene clip 20	11/m ²	7/m ²
9 Connect Hygiene clip 40	11/m ²	7/m ²
10 Connect Channel trim C3, fixed c300 (for 20 mm thickness)	as required	as required
11 Connect Channel trim C3, fixed c300 (for 40 mm thickness)	as required	as required

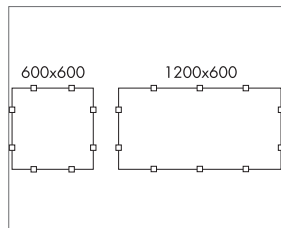
Δ Min. overall depth of system: 150 mm

δ Min. demounting depth 20 mm: 150 mm

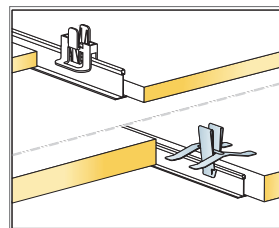
δ Min. demounting depth 40 mm: 170 mm



See Quantity specification



Arrangement of clips



Clips for keeping tiles in position

Size, mm	Max live load [N]	Min load bearing capacity [N]
600x600	50	160
1200x600	50	160

Live load/load bearing capacity